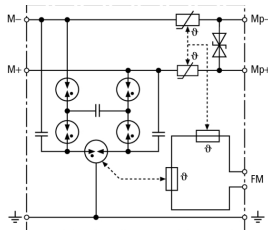


BVT KKS APD 36 (918 421)

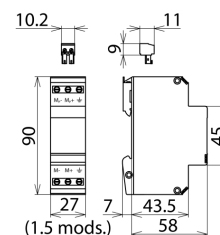
- For voltage measuring circuits
- Plug-in remote signalling contact
- For installation in conformity with the lightning protection zone concept at the boundaries from $0_A - 2$ and higher



Figure without obligation



Basic circuit diagram BVT KKS APD 36



Dimension drawing BVT KKS APD 36

Energy-coordinated combined lightning current and surge arrester for protecting voltage measuring circuits (yellow colour). Plug-in remote signalling contact (break contact) indicates overload (thermal monitoring of the discharge paths). Installation into steel-sheet enclosure recommended. A low impulse sparkover voltage is achieved by capacitive control.

Type	BVT KKS APD 36
Part No.	918 421
SPD class	TYPE 1 PI
Nominal voltage (U_n)	36 V
Max. continuous operating voltage (d.c.) (U_c)	36.8 V
Nominal current (I_n)	0.05 A
D1 Total lightning impulse current (10/350 μ s) (I_{imp})	7 kA
D1 Lightning impulse current (10/350 μ s) per line (I_{imp})	3.5 kA
C2 Total nominal discharge current (8/20 μ s) (I_n)	40 kA
C2 Nominal discharge current (8/20 μ s) per line (I_n)	20 kA
Voltage protection level line-line for I_{imp} D1 (U_p)	≤ 65 V
Voltage protection level line-PG for I_{imp} D1 (U_p)	≤ 800 V
Voltage protection level line-line at 1 kV/ μ s C3 (U_p)	≤ 48 V
Voltage protection level line-PG at 1 kV/ μ s PG (U_p)	≤ 600 V
A2 Total alternating current withstand capability	20 A
Series resistance per line	55 ohms
Cut-off frequency line-line (f_c)	4 dB at 1 MHz (100 ohms)
Capacitance line-line (C)	≤ 1 nF
Capacitance line-PG (C)	≤ 10 pF
Operating temperature range (T_U)	-40 °C ... +80 °C
Degree of protection	IP 20
For mounting on	35 mm DIN rails acc. to EN 60715
Connection (input / output)	screw / screw
Cross-sectional area, solid	0.5 mm-6 mm ²
Cross-sectional area, flexible	0.5 mm-4 mm ²
Tightening torque (terminal)	0.8 Nm
Earthing via	screw terminal
Enclosure material	thermoplastic, UL 94 V-0
Colour	yellow
Test standards	IEC 61643-21 / EN 61643-21
Approvals	EAC
Type of remote signalling contact	break contact
Switching capacity (d.c.)	250 V / 0.1 A, 125 V / 0.2 A, 75 V / 0.5 A
Switching capacity (a.c.)	250 V / 0.5 A
Cross-sectional area for remote signalling terminals	max. 1.5 mm ²
Weight	118 g
Customs tariff number (Comb. Nomenclature EU)	85363010
GTIN	4013364094901
PU	1 pc(s)

We reserve the right to introduce changes in performance, configuration and technology, dimensions, weights and materials in the course of technical progress. The figures are shown without obligation.