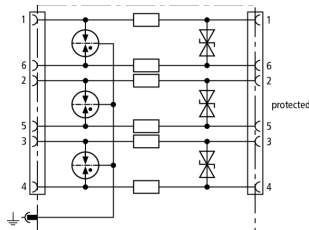


DLI TC BT (929 026)

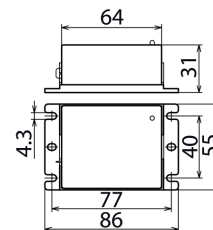
- Surface-mounted protective device for telecommunications systems
- Plug-in terminals allow quick installation
- Im compliance with British Telecom requirements



Figure without obligation



Basic circuit diagram DLI TC BT



Dimension drawing DLI TC BT

Surge protective device for analogue or system telephones in accordance with British Telecom requirements. Plug-in terminals allow easy installation. Energy-coordinated protective circuit for all pairs, no leakage currents to earth.

Type	DLI TC BT
Part No.	929 026
SPD class	TYPE 2 P2
Nominal voltage (U_N)	130 V
Max. continuous operating voltage (d.c.) (U_C)	145 V
Nominal current (I_L)	125 mA
D1 Lightning impulse current (10/350 μ s) per line (I_{imp})	1 kA
C2 Total nominal discharge current (8/20 μ s) (I_n)	10 kA
C2 Nominal discharge current (8/20 μ s) per line (I_n)	5 kA
Voltage protection level line-line for I_n C2 (U_p)	≤ 210 V
Voltage protection level line-PG for I_n C2 (U_p)	≤ 550 V
Voltage protection level line-line at 1 kV/ μ s C3 (U_p)	≤ 185 V
Voltage protection level line-PG at 1 kV/ μ s C3 (U_p)	≤ 450 V
Series resistance per line	4.7 ohm(s)
Cutt-off frequency (f_c)	13 MHz
Capacitance line-line (C)	≤ 400 pF
Capacitance line-PG (C)	≤ 10 pF
Operating temperature range (T_U)	-40 °C ... +80 °C
Degree of protection	IP 20
Connection (input / output)	BT jack / BT jack
Pinning	1/6, 2/5, 3/4
Earthing via	flat connector (6.3 mm)
Enclosure material	thermoplastic
Colour	black
Test standards	IEC 61643-21
Accessory	connecting cable, mounting material
Weight	216 g
Customs tariff number (Comb. Nomenclature EU)	85363010
GTIN	4013364082519
PU	1 pc(s)

We reserve the right to introduce changes in performance, configuration and technology, dimensions, weights and materials in the course of technical progress. The figures are shown without obligation.