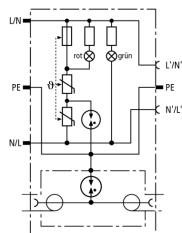


DPRO 230 TV (909 300)

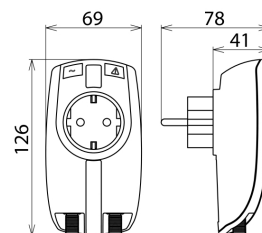
- Surge protective device for TV, radio or SAT applications with a modern design
- F socket to IEC plug adapter included
- For installation in conformity with the lightning protection zone concept at the boundaries from 2 – 3 and higher



Figure without obligation



Basic circuit diagram DPRO 230 TV



Dimension drawing DPRO 230 TV

Surge protective device for the power and antenna side of TV, radio or SAT receivers. With visual operating state and fault indication and integrated child lock.

Protection of the data side

Type	DPRO 230 TV
Part No.	909 300
SPD class	TYPE 2
Max. continuous operating voltage (d.c.) (U_c)	60 V
C2 Nominal discharge current (8/20 μ s) line-shield (PE) (I_n)	5 kA
Voltage protection level line-shield (PE) at 1 kV/ μ s C3 (U_p)	≤ 600 V
Insertion loss 0-2400 MHz	≤ 1.5 dB
Operating temperature range (T_u)	-25 °C ... +40 °C
Degree of protection	IP 20
Connection (input / output)	F socket / F socket
Earthing via	protective conductor connection
Enclosure material	thermoplastic, UL 94 V-2
Colour	pure white
Test standards	IEC 61643-21 / EN 61643-21

Protection of the power side

Type	DPRO 230 TV
Part No.	909 300
SPD according to EN 61643-11 / IEC 61643-11	type 3 / class III
Nominal voltage (a.c.) (U_n)	230 V (50 / 60 Hz)
Max. continuous operating voltage (a.c.) (U_c)	255 V (50 / 60 Hz)
Nominal load current (a.c.) (I_L)	16 A
Nominal discharge current (8/20 μ s) (I_n)	3 kA
Total discharge current (8/20 μ s) [L+N-PE] (I_{total})	5 kA
Combination wave (U_{oc})	6 kV
Combination wave [L+N-PE] ($U_{oc total}$)	10 kV
Voltage protection level [L-N] (U_p)	≤ 1.25 kV
Voltage protection level [L/N-PE] (U_p)	≤ 1.5 kV
Response time [L-N] (t_A)	≤ 25 ns
Response time [L/N-PE] (t_A)	≤ 100 ns
Max. mains-side overcurrent protection	16 A gL/gG or B 16 A
Short-circuit withstand capability for mains-side overcurrent protection (I_{SCCR})	1 kA _{rms}
Temporary overvoltage (TOV) [L-N] (U_T) – Characteristic	335 V / 5 sec. – withstand
Temporary overvoltage (TOV) [L-N] (U_T) – Characteristic	440 V / 120 min. – safe failure
Temporary overvoltage (TOV) [L/N-PE] (U_T) – Characteristic	335 V / 120 min. – withstand
Temporary overvoltage (TOV) [L/N-PE] (U_T) – Characteristic	440 V / 5 sec. – withstand
Temporary overvoltage (TOV) [L+N-PE] (U_T) – Characteristic	1200 V + U_{REF} / 200 ms – safe failure
Fault indication	red indicator light
Operating state indication	green indicator light
Number of ports	1
For mounting on	earthed socket outlets DIN 49440 / DIN 49441
Test standards	EN 61643-11
Weight	234 g
Customs tariff number (Comb. Nomenclature EU)	85363010
GTIN	4013364117723
PU	1 pc(s)

We reserve the right to introduce changes in performance, configuration and technology, dimensions, weights and materials in the course of technical progress. The figures are shown without obligation.