

SH1 18X3 ST (919 012)

- Extremely space-saving
- With one-sided contact
- For 35 mm DIN rails acc. to EN 60715

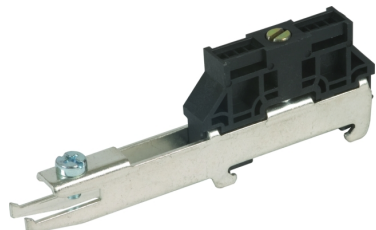
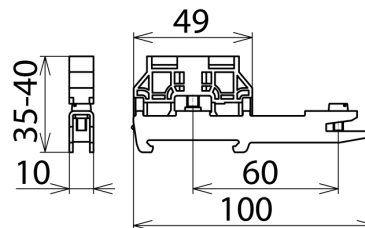


Figure without obligation



Dimension drawing SH1 18X3 ST

Rail support suitable for DIN rail mounting. Low-impedance connection of the shield terminals to the DIN rail via the busbar.

| | |
|---|----------------------------------|
| Type | SH1 18X3 ST |
| Part No. | 919 012 |
| Version | one-sided contact |
| Material | tin-plated steel |
| For mounting on | 35 mm DIN rails acc. to EN 60715 |
| Weight | 40 g |
| Customs tariff number (Comb. Nomenclature EU) | 85389099 |
| GTIN | 4013364071599 |
| PU | 1 pc(s) |

We reserve the right to introduce changes in performance, configuration and technology, dimensions, weights and materials in the course of technical progress. The figures are shown without obligation.