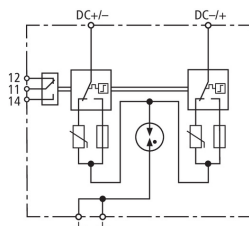


## DCB YPV SCI 600 FM (900 065)

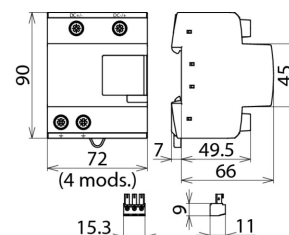
- Prewired type 1 and type 2 combined lightning current and surge arrester for use in photovoltaic generator circuits
- Combined disconnection and short-circuiting device with safe electrical isolation (patented SCI principle)
- Space-saving enclosure with a width of four modules



Figure without obligation



Basic circuit diagram DCB YPV SCI 600 FM



Dimension drawing DCB YPV SCI 600 FM

Combined lightning current and surge arrester for use in photovoltaic power supply systems up to 600 V d.c.; with floating remote signalling contact.

Type Part No.	DCB YPV SCI 600 FM 900 065
SPD according to EN 50539-11	type 1 + type 2
Max. PV voltage [DC+ -> DC-] ( $U_{CPV}$ )	$\leq 600$ V
Max. PV voltage [DC+/DC- -> PE] ( $U_{CPV}$ )	$\leq 450$ V
Short-circuit current rating ( $I_{SCPV}$ )	1000 A
Nominal discharge current (8/20 $\mu$ s) ( $I_n$ )	15 kA
Total discharge current (8/20 $\mu$ s) [DC+/DC- -> PE] ( $I_{total}$ )	30 kA
Total discharge current (10/350 $\mu$ s) [DC+/DC- -> PE] ( $I_{total}$ )	12.5 kA
Specific energy [DC+/DC- -> PE] (I)	39.06 kJ/ohms
Lightning impulse current (10/350 $\mu$ s) [DC+ -> PE/DC- -> PE] ( $I_{imp}$ )	6.25 kA
Specific energy [DC+ -> PE/DC- -> PE] (W/R)	9.76 kJ/ohms
Voltage protection level [(DC+/DC-) -> PE] ( $U_P$ )	1.75 kV
Voltage protection level [DC+ -> DC-] ( $U_P$ )	3 kV
Response time ( $t_A$ )	$\leq 25$ ns
Operating temperature range ( $T_U$ )	-40 °C ... +80 °C
Operating state / fault indication	green / red
Number of ports	1
Cross-sectional area (min.)	1,5 mm <sup>2</sup> solid / flexible
Cross-sectional area (max.)	35 mm <sup>2</sup> stranded / 25 mm <sup>2</sup> flexible
For mounting on	35 mm DIN rails acc. to EN 60715
Enclosure material	thermoplastic, red, UL 94 V-0
Place of installation	indoor installation
Degree of protection	IP 20
Dimensions	4 module(s), DIN 43880
Approvals	KEMA, UL
Type of remote signalling contact	changeover contact
Switching capacity (a.c.)	250 V / 0.5 A
Switching capacity (d.c.)	250 V / 0.1 A; 125 V / 0.2 A; 75 V / 0.5 A
Cross-sectional area for remote signalling terminals	max. 1.5 mm <sup>2</sup> solid / flexible
Weight	378 g
Customs tariff number (Comb. Nomenclature EU)	85363030
GTIN	4013364153714
PU	1 pc(s)

We reserve the right to introduce changes in performance, configuration and technology, dimensions, weights and materials in the course of technical progress. The figures are shown without obligation.