

DSH TT 255 FM (941 315)

- Application-optimised and prewired spark-gap-based type 1 and type 2 combined lightning current and surge arrester
- Compact design due to space-saving spark gap technology with a width of only 1 module / pole
- Allows compact lightning equipotential bonding including protection of terminal equipment

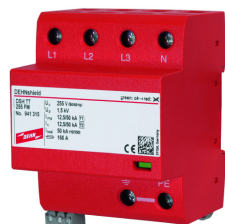
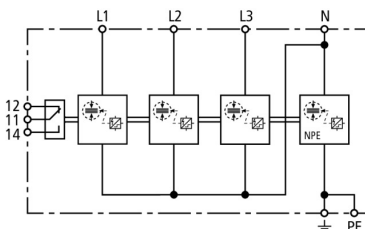
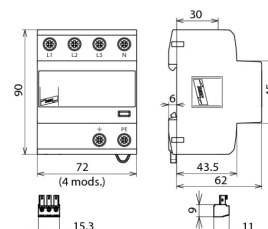


Figure without obligation



Basic circuit diagram DSH TT 255 FM



Dimension drawing DSH TT 255 FM

Application-optimised and prewired combined lightning current and surge arrester for TT and TN-S systems (3+1 configuration); with floating remote signalling contact.

| Type | DSH TT 255 FM |
|--|---|
| Part No. | 941 315 |
| SPD according to EN 61643-11 / IEC 61643-11 | type 1 + type 2 / class I + class II |
| Energy coordination with terminal equipment (≤ 10 m) | type 1 + type 2 + type 3 |
| Nominal voltage (a.c.) (U_N) | 230 / 400 V (50 / 60 Hz) |
| Max. continuous operating voltage (a.c.) (U_C) | 255 V (50 / 60 Hz) |
| Lightning impulse current (10/350 μ s) [L1+L2+L3+N-PE] (I_{total}) | 50 kA |
| Specific energy [L1+L2+L3+N-PE] (W/R) | 625.00 kJ/ohms |
| Lightning impulse current (10/350 μ s) [L-N]/[N-PE] (I_{imp}) | 12.5 / 50 kA |
| Specific energy [L-N]/[N-PE] (W/R) | 39.06 / 625.00 kJ/ohms |
| Nominal discharge current (8/20 μ s) [L-N]/[N-PE] (I_n) | 12.5 / 50 kA |
| Voltage protection level [L-N]/[N-PE] (U_p) | ≤ 1.5 / ≤ 1.5 kV |
| Follow current extinguishing capability [L-N]/[N-PE] (I_n) | 25 kA _{rms} / 100 A _{rms} |
| Follow current limitation / Selectivity | no tripping of a 32 A gG fuse up to 25 kA _{rms} (prosp.) |
| Response time (t_A) | ≤ 100 ns |
| Max. mains-side overcurrent protection | 160 A gG |
| Temporary overvoltage (TOV) [L-N] (U_T) – Characteristic | 440 V / 120 min. – withstand |
| Temporary overvoltage (TOV) [N-PE] (U_T) – Characteristic | 1200 V / 200 ms – withstand |
| Operating temperature range (T_U) | -40 °C ... +80 °C |
| Operating state / fault indication | green / red |
| Number of ports | 1 |
| Cross-sectional area (L1, L2, L3, N, PE, \oplus) (min.) | 1.5 mm ² solid / flexible |
| Cross-sectional area (L1, L2, L3, N, PE, \oplus) (max.) | 35 mm ² stranded / 25 mm ² flexible |
| For mounting on | 35 mm DIN rails acc. to EN 60715 |
| Enclosure material | thermoplastic, red, UL 94 V-0 |
| Place of installation | indoor installation |
| Degree of protection | IP 20 |
| Capacity | 4 module(s), DIN 43880 |
| Approvals | KEMA, VDE |
| Type of remote signalling contact | changeover contact |
| Switching capacity (a.c.) | 250 V / 0.5 A |
| Switching capacity (d.c.) | 250 V / 0.1 A; 125 V / 0.2 A; 75 V / 0.5 A |
| Cross-sectional area for remote signalling terminals | max. 1.5 mm ² solid / flexible |
| Extended technical data: | ----- |
| Voltage protection level [L-PE] (U_p) | 2.0 kV |
| Weight | 448 g |
| Customs tariff number (Comb. Nomenclature EU) | 85363090 |
| GTIN | 4013364275324 |
| PU | 1 pc(s) |

We reserve the right to introduce changes in performance, configuration and technology, dimensions, weights and materials in the course of technical progress. The figures are shown without obligation.