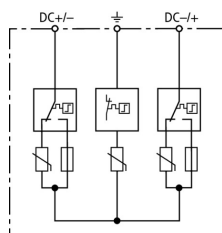


DG YPV SCI 600 (950 531)

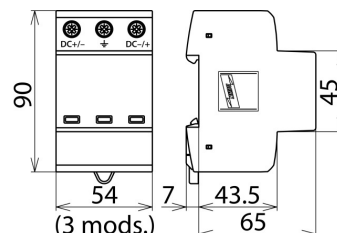
- Prewired complete unit for use in photovoltaic systems
- Combined disconnection and short-circuiting device with safe electrical isolation (patented SCI principle)
- Tried and tested fault-resistant Y circuit



Figure without obligation



Basic circuit diagram DG YPV SCI 600



Dimension drawing DG YPV SCI 600

Multipole surge arrester with three-step d.c. switching device for use in PV systems.

Type	DG YPV SCI 600
Part No.	950 531
SPD according to EN 50539-11	type 2
Energy coordination with terminal equipment (≤ 10 m)	type 2 + type 3
Max. PV voltage (U_{OPV})	600 V
Short-circuit current rating (I_{SCPV})	1000 A
Total discharge current (8/20 μ s) (I_{total})	40 kA
Nominal discharge current (8/20 μ s) [(DC+/DC-) \rightarrow PE] (I_n)	12.5 kA
Max. discharge current (8/20 μ s) [(DC+/DC-) \rightarrow PE] (I_{max})	25 kA
Voltage protection level (U_P)	≤ 2.5 kV
Voltage protection level at 5 kA (U_P)	≤ 2 kV
Response time (t_A)	≤ 25 ns
Operating temperature range (T_U)	-40 °C ... +80 °C
Operating state / fault indication	green / red
Number of ports	1
Cross-sectional area (min.)	1.5 mm ² solid / flexible
Cross-sectional area (max.)	35 mm ² stranded / 25 mm ² flexible
For mounting on	35 mm DIN rails acc. to EN 60715
Enclosure material	thermoplastic, red, UL 94 V-0
Place of installation	indoor installation
Degree of protection	IP 20
Capacity	3 mod(s), DIN 43880
Approvals	KEMA, UL
Weight	275 g
Customs tariff number (Comb. Nomenclature EU)	85363030
GTIN	4013364152953
PU	1 pc(s)

We reserve the right to introduce changes in performance, configuration and technology, dimensions, weights and materials in the course of technical progress. The figures are shown without obligation.