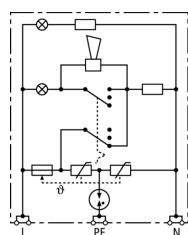


## DSA 230 LA (924 370)

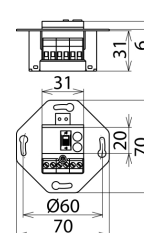
- For use in flush-type boxes and cable ducts
- Multiple indicator
- Programmable acoustic function



Figure without obligation



Basic circuit diagram DSA 230 LA



Dimension drawing DSA 230 LA

Surge protective device for use in cable ducts and flush-type boxes.

Type	DSA 230 LA
Part No.	924 370
SPD according to EN 61643-11 / IEC 61643-11	type 3 / class III
Nominal voltage (a.c.) ( $U_N$ )	230 V (50 / 60 Hz)
Max. continuous operating voltage (a.c.) ( $U_C$ )	255 V (50 / 60 Hz)
Nominal load current ( $I_L$ )	16 A
Nominal discharge current (8/20 $\mu$ s) ( $I_n$ )	3 kA
Total discharge current (8/20 $\mu$ s) [L+N-PE] ( $I_{total}$ )	5 kA
Combination wave ( $U_{OC}$ )	6 kV
Combination wave [L+N-PE] ( $U_{OC total}$ )	10 kV
Voltage protection level [L-N] / [L/N-PE] ( $U_p$ )	$\leq 1250$ / $\leq 1500$ V
Response time [L-N] ( $t_A$ )	$\leq 25$ ns
Response time [L/N-PE] ( $t_A$ )	$\leq 100$ ns
Max. mains-side overcurrent protection	B 16 A
Short-circuit withstand capability for max. mains-side overcurrent protection ( $I_{SCCR}$ )	1 kA <sub>rms</sub>
Temporary overvoltage (TOV) [L-N] ( $U_T$ ) – Characteristic	335 V / 5 sec. – withstand
Temporary overvoltage (TOV) [L-N] ( $U_T$ ) – Characteristic	440 V / 120 min. – safe failure
Temporary overvoltage (TOV) [L/N-PE] ( $U_T$ ) – Characteristic	335 V / 120 min. – withstand
Temporary overvoltage (TOV) [L/N-PE] ( $U_T$ ) – Characteristic	440 V / 5 sec. – withstand
Temporary overvoltage (TOV) [L+N-PE] ( $U_T$ ) – Characteristic	1200 V + $U_{REF}$ / 200 ms – safe failure
Fault indication	red light + acoustic signal
Operating state indication	green light
Number of ports	1
Switch	function test / acoustic signal off
Operating temperature range ( $T_U$ )	-25 °C ... +40 °C
Cross-sectional area (min.)	0.5 mm <sup>2</sup> solid / stranded / flexible
Cross-sectional area (max.)	2.5 mm <sup>2</sup> solid / stranded / flexible
For mounting on	retaining rings ( $\varnothing 60$ mm) for installation in switch boxes (40 mm deep)
Enclosure material	thermoplastic, grey, UL 94 V-2
Place of installation	indoor installation
Degree of protection	IP 20
Cover	TAE
Weight	71 g
Customs tariff number (Comb. Nomenclature EU)	85363010
GTIN	4013364081321
PU	1 pc(s)

We reserve the right to introduce changes in performance, configuration and technology, dimensions, weights and materials in the course of technical progress. The figures are shown without obligation.