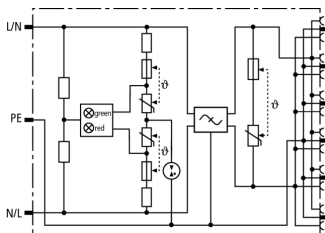


SFL PRO 6X 19" (909 251)

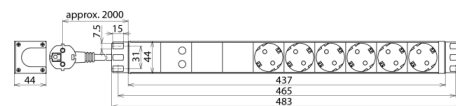
- Surge protection with monitoring device and disconnecter
- Interference suppressor filter
- Visual operating state (green) and fault indication (red)



Figure without obligation



Basic circuit diagram SFL PRO 6X 19"



Dimension drawing SFL PRO 6X 19"

Surge protective multiple socket outlet with mains filter for 482.6 mm (19 inches) data cabinets.

Type	SFL PRO 6X 19"
Part No.	909 251
SPD according to EN 61643-11 / IEC 61643-11	type 3 / class III
Nominal a.c. voltage (U_N)	230 V (50 / 60 Hz)
Max. continuous operating voltage (a.c.) (U_C)	255 V (50 / 60 Hz)
Nominal load current (a.c.) (I_L)	16 A
Voltage drop in percent for U_C/I_L (ΔU)	$\leq 0.5 \%$
Nominal discharge current (8/20 μ s) (I_n)	3 kA
Total discharge current (8/20 μ s) [L+N-PE] (I_{total})	5 kA
Combined wave (U_{OC})	6 kV
Combined wave [L+N-PE] ($U_{OC total}$)	10 kV
Voltage protection level (U_P)	≤ 1.5 kV
Response time [L-N] (t_A)	≤ 25 ns
Response time [L/N-PE] (t_A)	≤ 100 ns
Max. mains-side overcurrent protection	B 16 A
Short-circuit withstand capability for max. mains-side overcurrent protection (I_{SCCR})	1.5 kA _{rms}
Temporary overvoltage (TOV) [L-N] (U_T) – Characteristic	335 V / 5 sec. – withstand
Temporary overvoltage (TOV) [L-N] (U_T) – Characteristic	440 V / 120 min. – safe failure
Temporary overvoltage (TOV) [L/N-PE] (U_T) – Characteristic	335 V / 120 min. – withstand
Temporary overvoltage (TOV) [L/N-PE] (U_T) – Characteristic	440 V / 5 sec. – withstand
Temporary overvoltage (TOV) [L+N-PE] (U_T) – Characteristic	1200 V + U_{REF} / 200 ms – safe failure
Fault indication	red light
Operating state indication	green light
Number of ports	2
Operating temperature range (T_U)	-20 °C ... +40 °C
Connecting cable	approx. 2000 mm
Number of socket outlets	6
For mounting on	earthed socket outlets DIN 49440 / DIN 49441
Enclosure material	anodised aluminium profile, silver
Place of installation	indoor installation
Degree of protection	IP 20
Dimensions	483 x 44 x 44 mm
Mains filter	acc. to EN 60393-1 (DIN VDE 0565-3)
Attenuation for f = 1 MHz, balanced	≥ 32 dB
Attenuation for f = 1 MHz, unbalanced	≥ 30 dB
Weight	1 kg
Customs tariff number (Comb. Nomenclature EU)	85369010
GTIN	4013364132573
PU	1 pc(s)

We reserve the right to introduce changes in performance, configuration and technology, dimensions, weights and materials in the course of technical progress. The figures are shown without obligation.