

KFP 20 RL 16 (720 016)



Figure without obligation

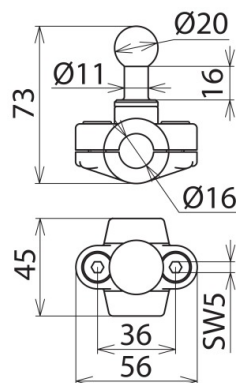


Figure without obligation

Type	KFP 20 RL 16
Part No.	720 016
Fixed ball point Ø	20 mm
For round conductor Ød	16 mm
Max. cable cross-section Cu	50 mm ²
Max. short-circuit current I _k 0.5 s	14.0 kA
Max. short-circuit current I _k 1 s	9.9 kA
Standard	EN/IEC 61230 (DIN VDE 0683-100)
Material (fixed ball point)	E-Cu/gal Sn
Material (round conductor parts)	Copper alloy/gal Sn
Bolt	Hexagon socket-head bolt
Bolt material	Stainless steel
Weight	309 g
Customs tariff number (Comb. Nomenclature EU)	85389099
GTIN	4013364003729
PU	1 pc(s)

We reserve the right to introduce changes in performance, configuration and technology, dimensions, weights and materials in the course of technical progress. The figures are shown without obligation.