

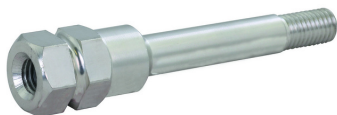
# Earthing and Short-Circuiting Devices (partly insulated) for Low-Voltage Cable Distribution Cabinets

## Accessories

### AD EP TI M10 (745 022)

Adapter for earthing cartridges NH 1...3, partly insulated, with M10 connection.

For screwing in by means of earthing handle TI through opening ( $D_{\min} = 11 \text{ mm}$ ) in the window of NH fuse switch disconnectors.



Type	AD EP TI M10
Part No.	745 022
Material	Ms/gal CuSn
Thread size	M10
Diameter (bolt)	11 mm
Max. short-circuit current $I_k$ 0.5 s	9.6 kA
Max. short-circuit current $I_k$ 1 s	6.9 kA
Weight	114 g
Customs tariff number (Comb. Nomenclature EU)	85389099
GTIN	4013364353138
PU	3 pc(s)

